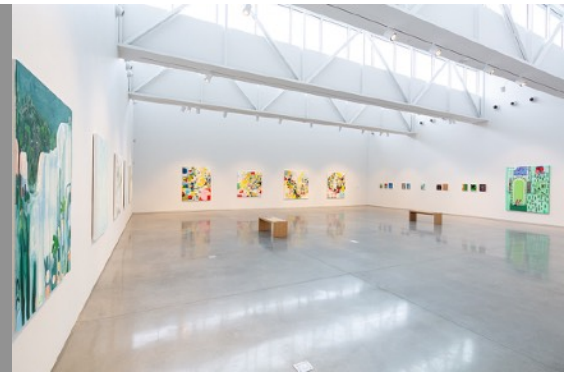


Skirting the Line



GRADE LEVEL

1st & under

PROJECT OVERVIEW

Create an abstract drawing/painting of a maze, by outlining a variety of shapes and then filling them in with bold colors.

GOALS

Students will understand:

- How close observation is a tool for learning and discovery
- Abstraction can be the process of breaking down ideas into simple shapes
- Exploration of overlapping colors, shapes, lines
- Ability to identify difference between shapes, colors, lines

ARTIST

Meghan Brady | Camden, ME

Art inspiration and form include drawing, painting, printmaking and ceramics in her paper works. Using bold colors and form, her work creates a generous gesture for the audience to embody.

INTRODUCTION

Skirting the Line presents the work of five contemporary painters whose work hovers on the line between abstraction and representation. Employing different techniques to create new forms of landscape, still life and the figure, each artist has a unique but cohesive visual language exploring the idea of what it means to portray a subject by looking at the interplay between abstraction and representation. Each reinvents painting today through energetic personal expression.

LESSON

Experience the Center for Maine Contemporary Arts exhibit *Skirting the Line*. Identify where Meghan Brady's work is located in our [virtual tour](#). Looking at the large work in the entryway discuss about what you see. Create your own abstract drawing/painting of a maze, by outlining a variety of shapes and lines which you can fill in with bold colors.

CRITICAL QUESTIONS

What colors do you see? What shapes? How does this work of art make you feel? How do you think the artist created this piece? Does this remind you of anything? What does abstract mean?

CELEBRATE YOUR WORK

Share out your artwork and educate others about your process, whether it be with family or classmates, and share with us [@cmcanow](#).

VOCABULARY

Outline drawing/sketch restricted to line without shading or modeling of form

Shape a flat enclosed area formed by line(s)

Line a sometime continuous mark that is made by a pen, pencil, marker, brush onto a surface

Overlap placing marks onto one another, to layer

Abstract a form of artistic response to a physical reality, simplified marks to complex physical information

Texture how a surface feels

Pattern marks that repeat over a select area

MATERIALS

- paper, newspaper, cardboard
- Paints & brushes
- Crayon, pencils, markers
- Shapes to trace



INSTRUCTIONS

STEP 1

Imagine a maze, maybe it's made of corn, blocks, or LEGOs, try building it if you have the materials. What is exciting about this maze? What shapes do you see that make up the tunnels, corners, and stops? Identify and draw/paint the outline of 4 large shapes that you see in your maze.

STEP 2

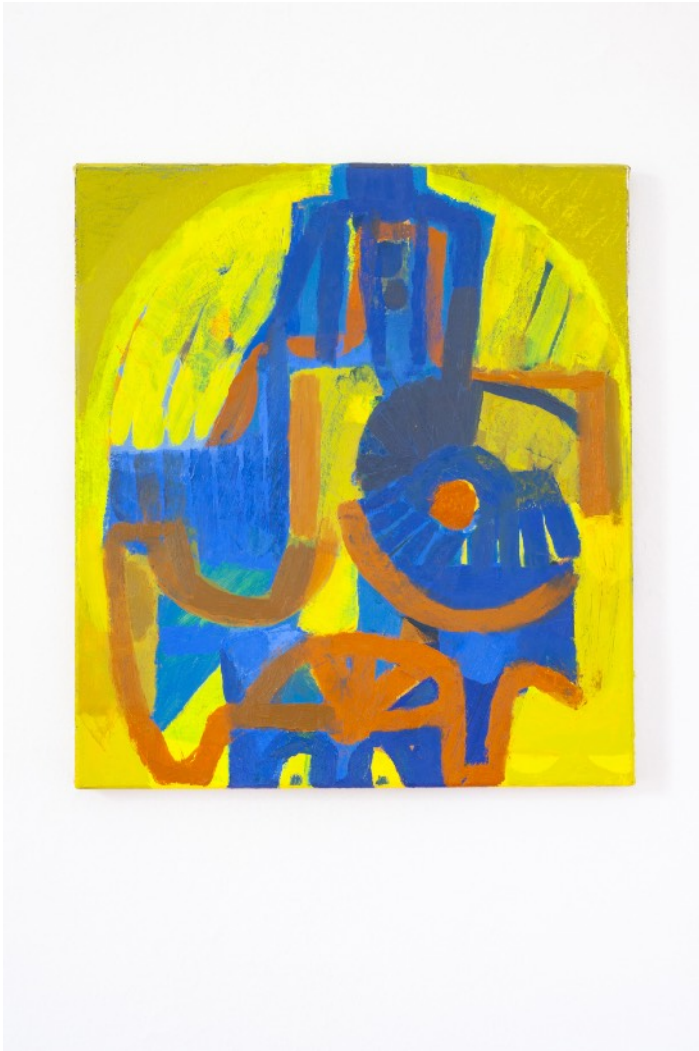
Brainstorm together different types of lines and draw/paint those lines between the shapes creating a path through the maze. Try twisting and turning around each shape as if you were guiding a small person around each corner and bend. Repeat the same path using a different line variety; overlapping and intersecting lines.

STEP 3

Color in the shapes using bold colors and try making additional marks to create textures and patterns inside. Ta Da! Your artwork is not supposed to look exactly like the map you created, but is an individual response to the physical form and a marker that the maze exists.

STEP 4

Discuss the artwork, what was your inspiration? See if you can identify together the different types of lines, shapes, and colors you see.



Meghan Brady

Left: *Honey*

2019

Oil on Canvas

18 X 16"

Below: *Feverdream*

2020

Acrylic and Collage on Paper

60 X 60"

